

PHASE 2A PEDESTRIAN DETOUR PLAN
Scale: 1" = 20' (Full Size)

LEGEND

- PHASE 2A WORK ZONE
- PHASE 2B WORK ZONE
- PEDESTRIAN DETOUR ROUTE
- GRAVEL BYPASS FOR PEDESTRIAN DETOUR (4' MIN WIDE)
- TYPE III BARRICADE
- TYPE I BARRICADE
- TEMPORARY SIGN

SIGN LEGEND

	R9-9 24"x12" MOUNTED ON TYPE II ADA COMPLIANT BARRICADE		R9-11R 24"x21" MOUNTED ON TYPE II ADA COMPLIANT BARRICADE
	R9-11L 24"x21" MOUNTED ON TYPE II ADA COMPLIANT BARRICADE		R9-11a 24"x21" MOUNTED ON TYPE II ADA COMPLIANT BARRICADE
	M4-9bR 30" x 24" MOUNTED ON ADA COMPLIANT TYPE II BARRICADE		M4-9bL 30" x 24" MOUNTED ON ADA COMPLIANT TYPE II BARRICADE
	M4-8a 24" x 18" MOUNTED ON ADA COMPLIANT TYPE II BARRICADE		

- NOTES:**
- CONTRACTOR TO MAINTAIN SIDEWALK DETOURS AT ALL TIMES.
 - SIDEWALK CLOSED SIGNS SHALL BE PLACED ON BARRICADES AT EACH SIDEWALK CLOSURE. SIDEWALK DETOUR SIGNS SHALL BE PLACED IN ADVANCE OF ALL CLOSURES ALONG THE ROUTE SHOWN ON THIS PLAN PER CITY OF TOPEKA STANDARD DETAIL DRAWING DT-118.
 - REFERENCE THE INDIVIDUAL CONSTRUCTION PHASING SHEETS FOR ROADWAY PHASING.
 - THE CONNECTION TO THE WEST SIDE OF TOPEKA BLVD FOR THE PEDESTRIAN ROUTE ON 37TH STREET EAST OF TOPEKA BLVD IS CLOSED DURING THIS PHASE. IN OTHER WORDS, EAST-WEST PEDESTRIAN CROSSING OF TOPEKA BLVD WILL BE CLOSED THIS PHASE.

File Location: Y:\Kansas\132x\605\1325-600005-PROD-PED DETOUR PLAN-PHASE 2 (TOPEKA BLVD).dwg [Plot Date: 4/17/2026 2:24:47 PM] [Last Saved: 4/8/2026 1:26:32 PM; Blue]

NO.	DATE:	REVISION	BY:	APPD:

DRAWN BY: _____
APP'D BY: _____

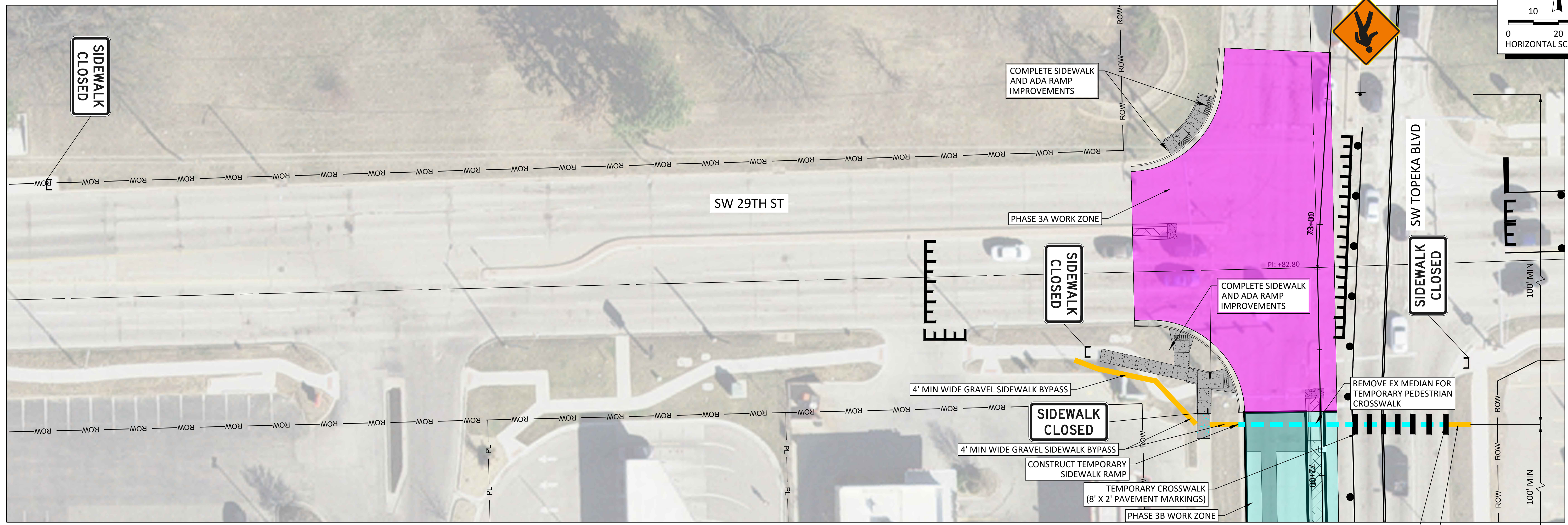
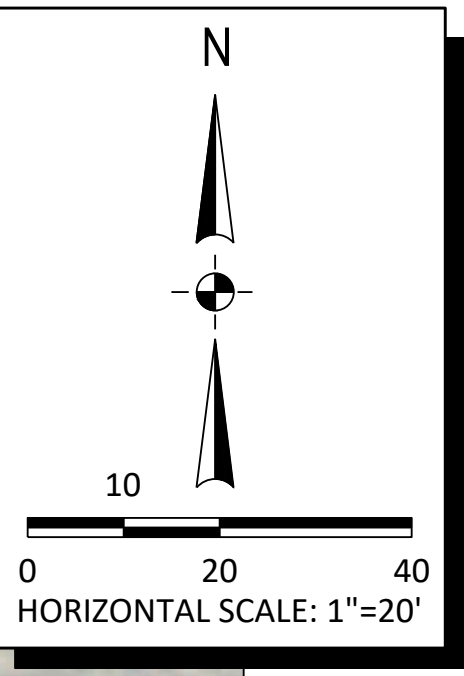
Alfred Benesch & Company
 123 SE 6th, Suite 200
 Topeka, Kansas 66603
 Ph 785.409.6507 Job No. - 1325-600005.00

620 SE MADISON St. • 2nd Floor • TOPEKA, KS 66607
 Phone: (785) 368-3842 • Fax: (785) 368-3881

TOPEKA BLVD
 IMPROVEMENTS:
 PROJECT #701038.00

PEDESTRIAN DETOUR PLAN
 PHASE 2

DATE: APR 2026
 SHEET: 112 OF 122
 PROJ.: 701038.00



PHASE 3A/3B PEDESTRIAN DETOUR PLAN
Scale: 1" = 20' (Full Size)

SEE SHEET 114 FOR PHASE 3B PEDESTRIAN DETOUR PLANS

- NOTES:**
- CONTRACTOR TO MAINTAIN SIDEWALK DETOURS AT ALL TIMES. SIDEWALK CLOSED SIGNS SHALL BE PLACED ON BARRICADES AT EACH SIDEWALK CLOSURE. SIDEWALK DETOUR SIGNS SHALL BE PLACED IN ADVANCE OF ALL CLOSURES ALONG THE ROUTE SHOWN ON THIS PLAN PER CITY OF TOPEKA STANDARD DETAIL DRAWING DT-118.
 - REFERENCE THE INDIVIDUAL CONSTRUCTION PHASING SHEETS FOR ROADWAY PHASING.
 - EXISTING PEDESTRIAN ROUTES SHALL BE MAINTAINED WHERE POSSIBLE.
 - ALL TEMPORARY MARKINGS, RAMPS, RRFBS, ETC. ARE SUBSIDIARY TO TRAFFIC CONTROL. INCLUDE TEMPORARY CROSSWALK BARS AND TEMPORARY RRFB SIGNS AT CROSSWALK.

SIGN LEGEND

	R9-9 24"x12" MOUNTED ON TYPE II ADA COMPLIANT BARRICADE		R9-11R 24"x21" MOUNTED ON TYPE II ADA COMPLIANT BARRICADE
	R9-11L 24"x21" MOUNTED ON TYPE II ADA COMPLIANT BARRICADE		R9-11a 24"x21" MOUNTED ON TYPE II ADA COMPLIANT BARRICADE
	M4-9bR 30" x 24" MOUNTED ON ADA COMPLIANT TYPE II BARRICADE		M4-9bL 30" x 24" MOUNTED ON ADA COMPLIANT TYPE II BARRICADE
	M4-8a 24" x 18" MOUNTED ON ADA COMPLIANT TYPE II BARRICADE		W11-2 30" x 30" MOUNTED ON PROPOSED TEMPORARY POST

LEGEND

	PHASE 3A WORK ZONE
	PHASE 3B WORK ZONE
	PEDESTRIAN DETOUR ROUTE
	GRAVEL BYPASS FOR PEDESTRIAN DETOUR 4' MIN WIDE
	TYPE III BARRICADE
	TYPE I BARRICADE
	TEMPORARY SIGN

NO.	DATE	REVISION	BY	APPD

DRAWN BY: _____
APPD BY: _____

benesch
Alfred Benesch & Company
123 SE 6th, Suite 200
Topeka, Kansas 66603
Ph 785.409.6507 Job No. - 1325-600005.00

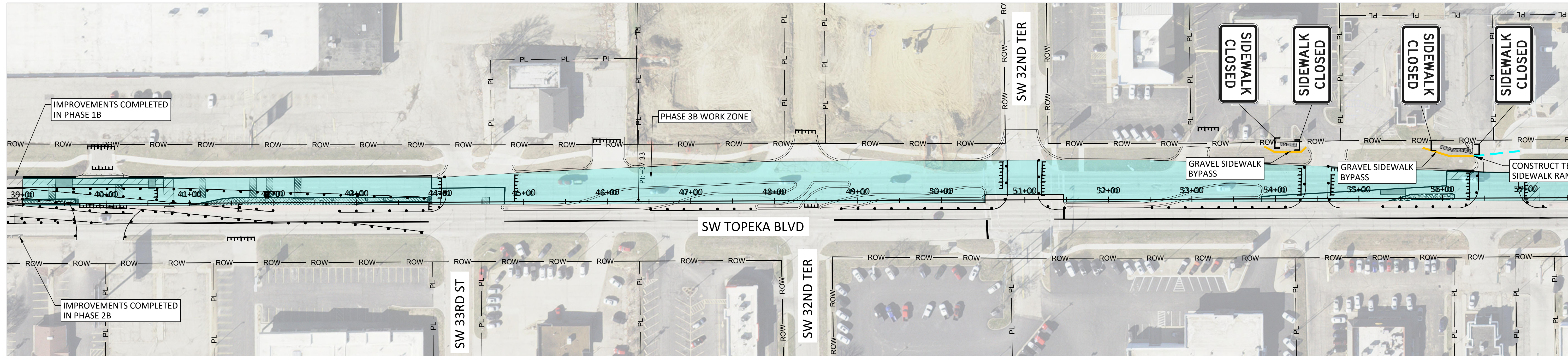
TOPEKA
Public Works
ENGINEERING
620 SE MADISON St. • 2nd Floor • TOPEKA, KS 66607
Phone: (785) 368-3842 • Fax: (785) 368-3881

TOPEKA BLVD IMPROVEMENTS:
PROJECT #701038.00

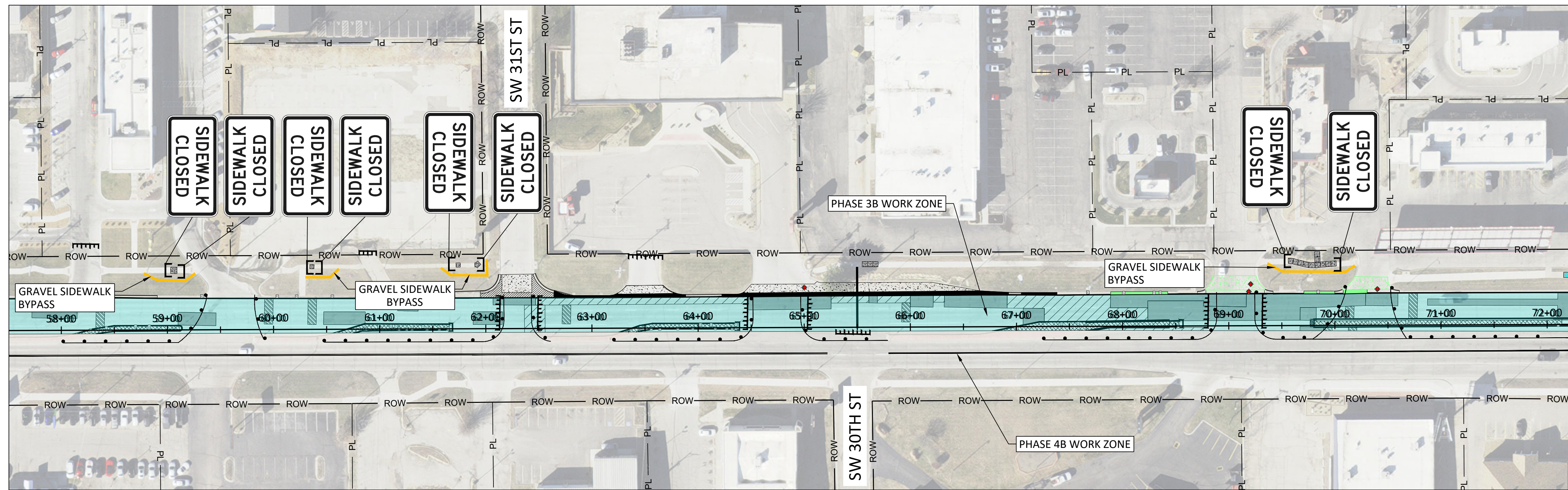
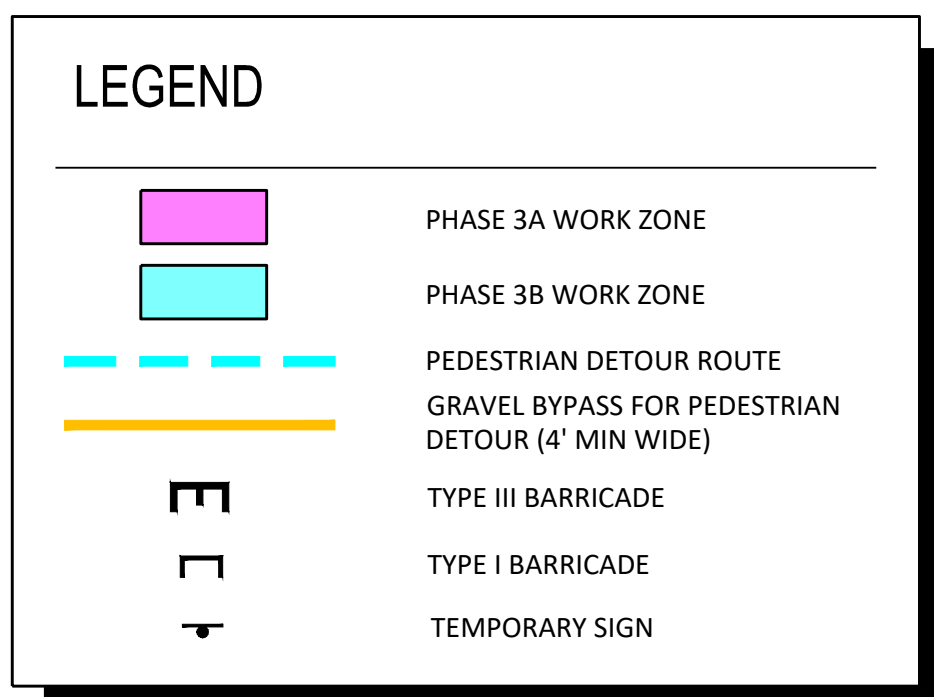
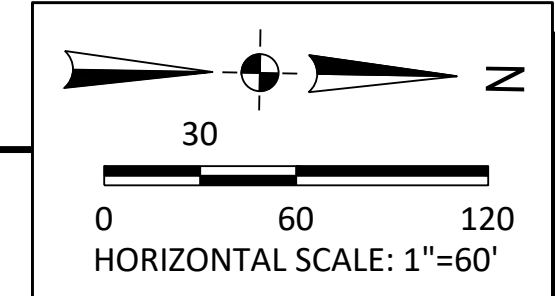
PEDESTRIAN DETOUR PLAN
PHASE 3A_3B

DATE: APR 2026
SHEET: 113 OF 122
PROJ.: 701038.00

File Location: Y:\Kansas\1325-6005\1325-600005-PROD-PED DETOUR PLAN-PHASE 3 (TOPEKA BLVD).dwg | Plot Date: 4/17/2026 2:25:42 PM | Plot Date: 4/18/2026 1:29:42 PM | Blec

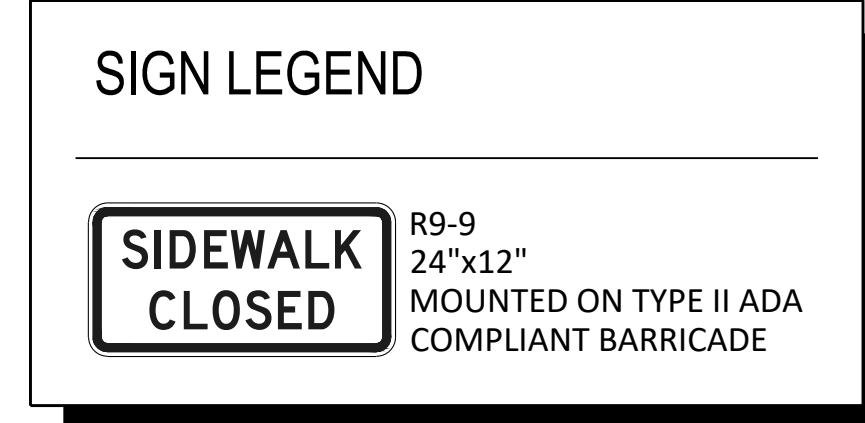


PHASE 3B PEDESTRIAN DETOUR PLAN
Scale: 1" = 60' (Full Size)



PHASE 3B PEDESTRIAN DETOUR PLAN
Scale: 1" = 60' (Full Size)

SEE SHEET 113 FOR PHASE 3A PEDESTRIAN DETOUR PLANS



- NOTES:**
- CONTRACTOR TO MAINTAIN SIDEWALK DETOURS AT ALL TIMES. SIDEWALK CLOSED SIGNS SHALL BE PLACED ON BARRICADES AT EACH SIDEWALK CLOSURE. SIDEWALK DETOUR SIGNS SHALL BE PLACED IN ADVANCE OF ALL CLOSURES ALONG THE ROUTE SHOWN ON THIS PLAN PER CITY OF TOPEKA STANDARD DETAIL DRAWING DT-118.
 - REFERENCE THE INDIVIDUAL CONSTRUCTION PHASING SHEETS FOR DETAILED PEDESTRIAN SIGNING.
 - EXISTING PEDESTRIAN ROUTES SHALL BE MAINTAINED WHERE POSSIBLE.
 - TEMPORARY RAMPS ARE SUBSIDIARY TO TRAFFIC CONTROL. LIMIT ALL DETOURS TO 7 DAYS.

File Location: Y:\Kansas\1325-60005\1325-60005-PROD-PED DETOUR PLAN-PHASE 3 (TOPEKA BLVD).dwg | Plot Date: 4/17/2026 2:26:29 PM | Last Saved: 4/8/2026 1:29:42 PM | Blec

NO.	DATE:	REVISION	BY:	APPD

DRAWN BY: _____
APPD BY: _____

benesch
Alfred Benesch & Company
123 SE 6th, Suite 200
Topeka, Kansas 66603
Ph 785.409.6507 Job No. - 1325-600005.00

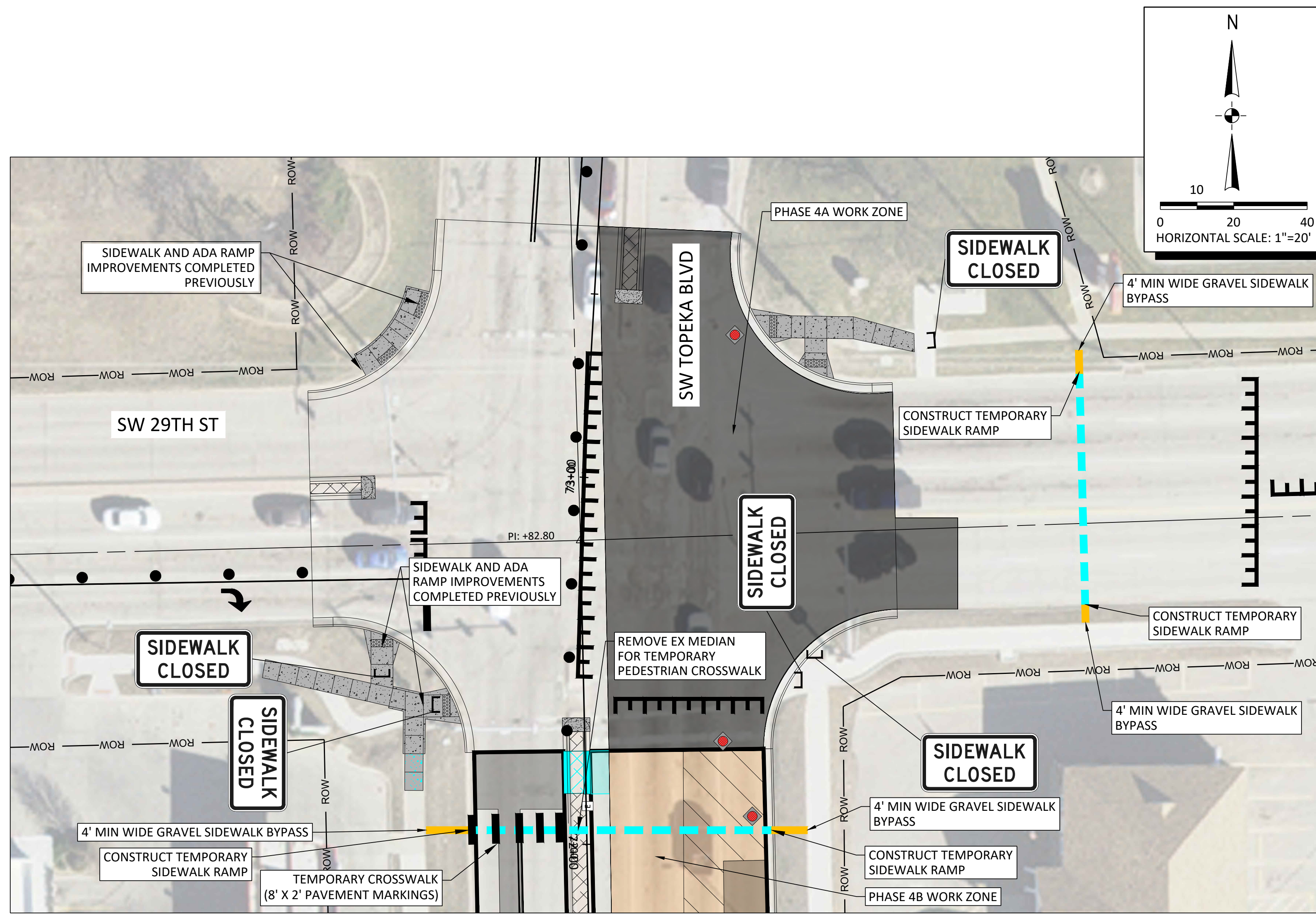
TOPEKA
Public Works
ENGINEERING
620 SE MADISON St. • 2nd Floor • TOPEKA, KS 66607
Phone: (785) 368-3842 • Fax: (785) 368-3881

TOPEKA BLVD
IMPROVEMENTS:
PROJECT #701038.00

PEDESTRIAN DETOUR PLAN
PHASE 3B

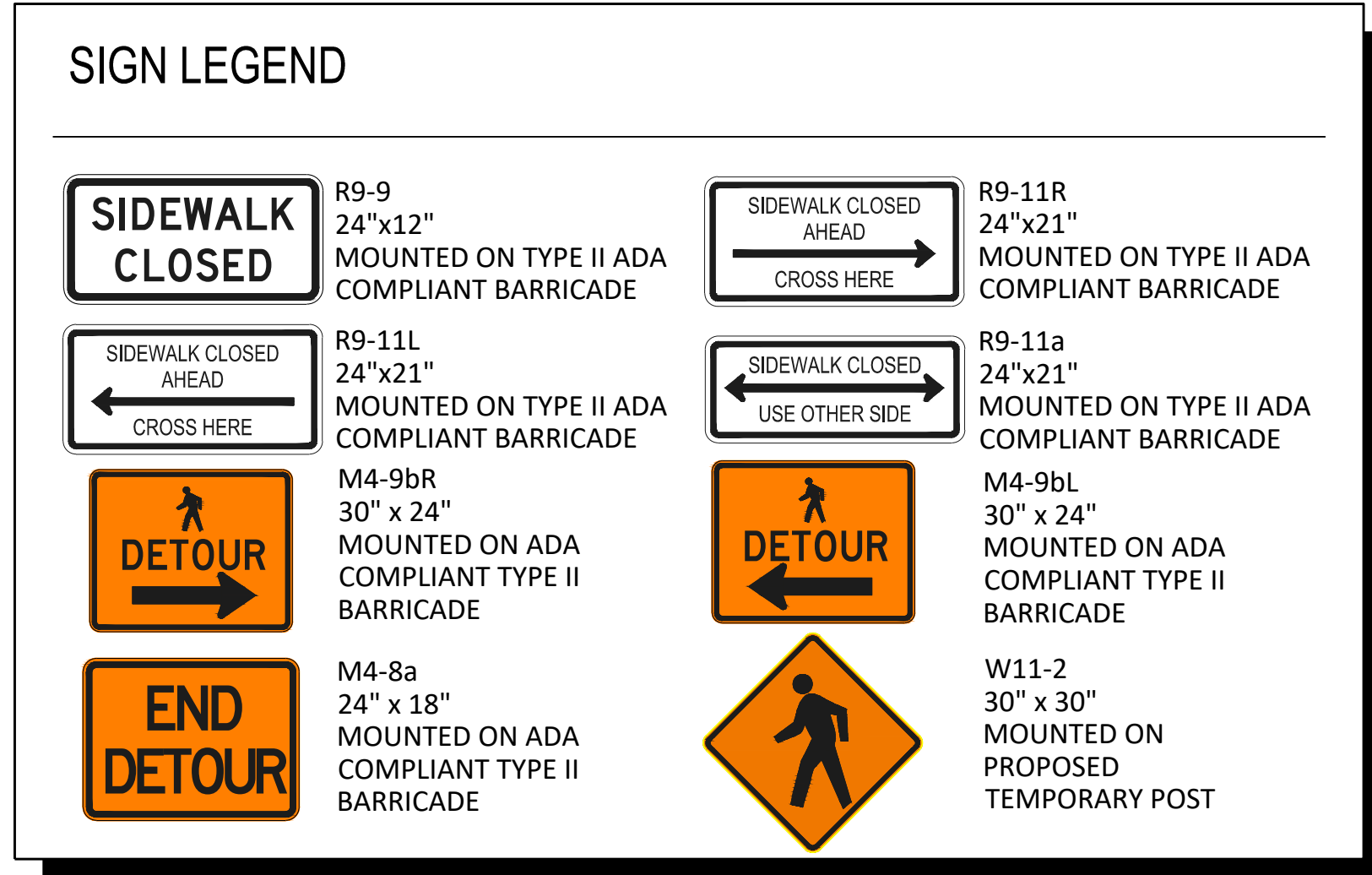
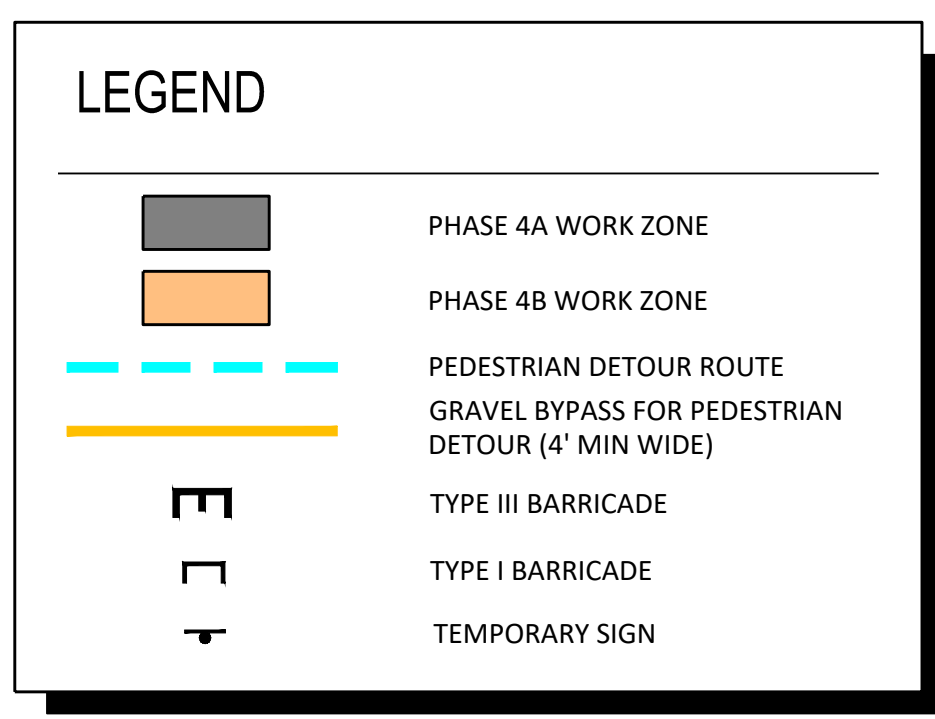
DATE: APR 2026
SHEET: 114 OF 122
PROJ.: 701038.00

File Location: Y:\Kansas\1325-60005\1325-600005-PROD-PED DETOUR PLAN-PHASE 4 (TOPEKA BLVD).dwg [Plot Date: 4/17/2026 2:26:52 PM] [Last Saved: 4/8/2026 1:31:43 PM; Blue]



PHASE 4A PEDESTRIAN DETOUR PLAN
Scale: 1" = 20' (Full Size)

- NOTES:**
1. CONTRACTOR TO MAINTAIN SIDEWALK DETOURS AT ALL TIMES.
 2. SIDEWALK CLOSED SIGNS SHALL BE PLACED ON BARRICADES AT EACH SIDEWALK CLOSURE. SIDEWALK DETOUR SIGNS SHALL BE PLACED IN ADVANCE OF ALL CLOSURES ALONG THE ROUTE SHOWN ON THIS PLAN PER CITY OF TOPEKA STANDARD DETAIL DRAWING DT-118.
 3. REFERENCE THE INDIVIDUAL CONSTRUCTION PHASING SHEETS FOR ROADWAY PHASING.
 4. EXISTING PEDESTRIAN ROUTES SHALL BE MAINTAINED WHERE POSSIBLE.
 5. ALL TEMPORARY MARKINGS, RAMPS, RRFB'S, ETC. ARE SUBSIDIARY TO TRAFFIC CONTROL.
 6. INCLUDE TEMPORARY CROSSWALK BARS AND TEMPORARY RRFB SIGNS AT CROSSWALK.



NO.	DATE:	REVISION	BY:	APPD

DRAWN BY: _____
APPD BY: _____

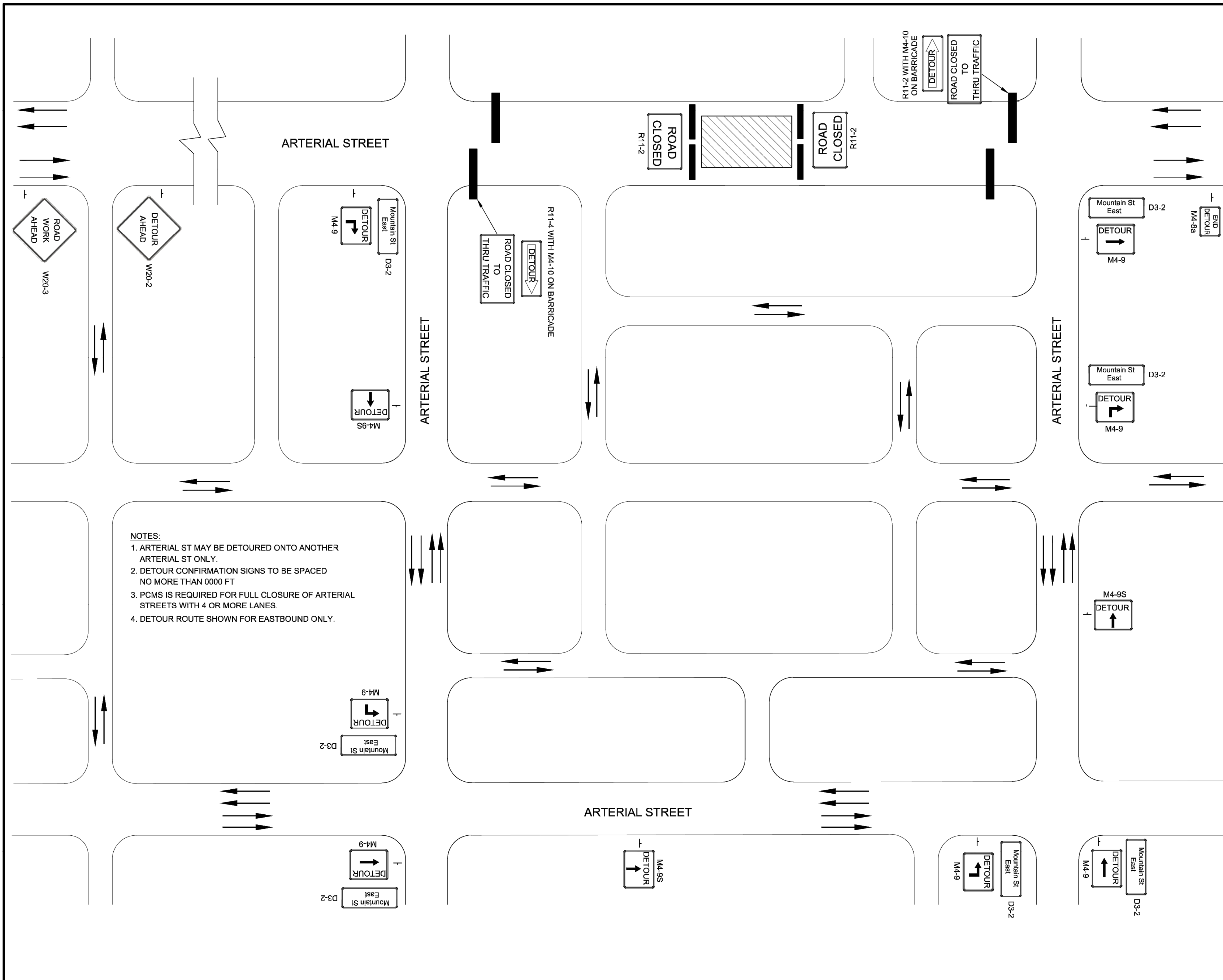
benesch
Alfred Benesch & Company
123 SE 6th, Suite 200
Topeka, Kansas 66603
Ph 785.409.6507 Job No. - 1325-600005.00

TOPEKA
Public Works
ENGINEERING
620 SE MADISON St. • 2nd Floor • TOPEKA, KS 66607
Phone: (785) 368-3842 • Fax: (785) 368-3881

TOPEKA BLVD
IMPROVEMENTS:
PROJECT #701038.00

PEDESTRIAN DETOUR PLAN
PHASE 4A

DATE: APR 2026
SHEET: 115 OF 122
PROJ.: 701038.00



- NOTES:**
1. ARTERIAL ST MAY BE DETOURED ONTO ANOTHER ARTERIAL ST ONLY.
 2. DETOUR CONFIRMATION SIGNS TO BE SPACED NO MORE THAN 0000 FT
 3. PCMS IS REQUIRED FOR FULL CLOSURE OF ARTERIAL STREETS WITH 4 OR MORE LANES.
 4. DETOUR ROUTE SHOWN FOR EASTBOUND ONLY.

GENERAL NOTES:

72-HOUR NOTICE TO CITY IS REQUIRED BEFORE WORK IS STARTED. CONTACT 785-368-3842 FOR TRAFFIC DISRUPTION PERMIT.

72-HOUR NOTICE IS REQUIRED IF TRAFFIC SIGNALS ARE TO BE MODIFIED AS PART OF TRAFFIC CONTROL. CONTACT 785-368-3913.

ALL SIGNS SHALL TO BE REMOVED, COVERED, OR TURNED AWAY FROM TRAFFIC WHEN NOT IN USE.

ALL WORKERS SHALL WEAR HIGH VISIBILITY APPAREL MEETING ANSI 107-2015 CLASS 2 OR 3.

FOR OPERATIONS OF LESS THAN 60 MINUTES, ALL SIGNS AND CHANNELIZING DEVICES MAY BE ELIMINATED IF A VEHICLE WITH HIGH INTENSITY ROTATING, FLASHING, OSCILLATING, OR STROBE LIGHTS IS USED. VEHICLE WARNING FLASHERS SHALL NOT BE USED IN LIEU OF ROTATING FLASHING BEACONS LONGER THAN 15 MINUTES.

FORMULAS FOR DETERMINING TAPER LENGTH

SPEED (S)	TAPER LENGTH (L) IN FEET
40 MPH OR LESS	$L = \frac{WS^2}{60}$
45 MPH OR MORE	$L = WS$

WHERE: L = TAPER LENGTH IN FEET
 W = WIDTH OF LANE OR OFFSET IN FEET
 S = POSTED SPEED LIMIT PRIOR TO WORK STARTING

SPEED LIMIT	TAPER (L) 12' LANE	SIGN SPACING (X)	BUFFER SPACE
20mph	80'	100'	115'
25mph	125'	100'	155'
30mph	180'	100'	200'
35mph	245'	100'	250'
40mph	320'	100'	305'
45mph	540'	350'	360'

TABLE 118 A (1)

EXCEPT AS NOTED (DOWNSTREAM TAPER, FLAGGER OPERATIONS, YIELD OPERATION), SPACE CHANNELIZER @ SPEED LIMIT. IF SPEED LIMIT IS 40mph SET DEVICES AT 40'.

LEGEND

- = SIGN
- = TYPE III BARRICADE
- = CHANNELIZING DEVICES
- ◀◀◀◀ = ARROW PANEL BOARD
- ▨ = WORK SPACE
- ⏏ = FLAGGER

NO.	DATE	REVISION	BY	APP'D
1	10/30/20	MAJOR REVISION	SU	KRE

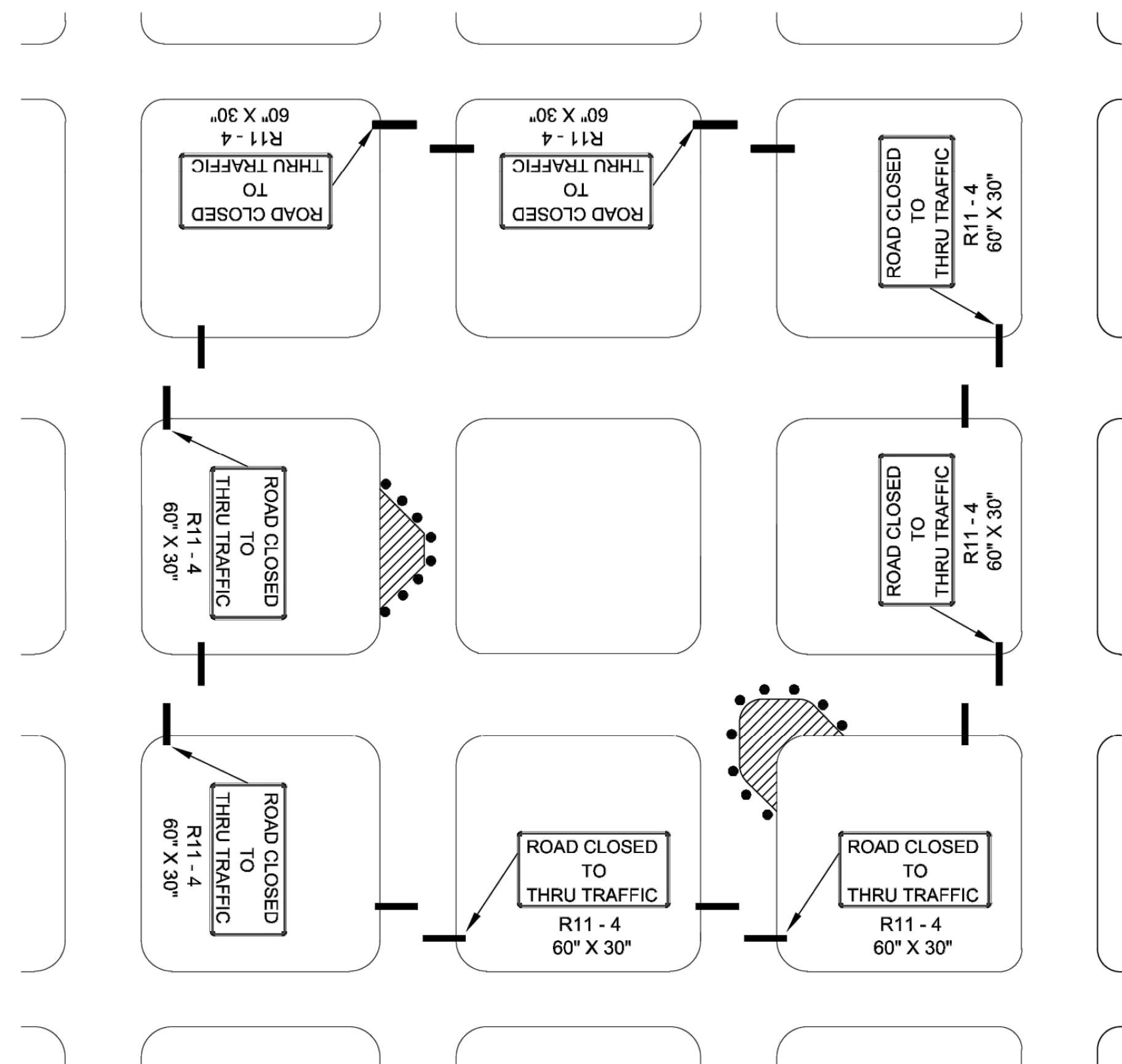
DRAWN BY: Shoeb Uddin
 APP'D BY: Kristi Ericksen



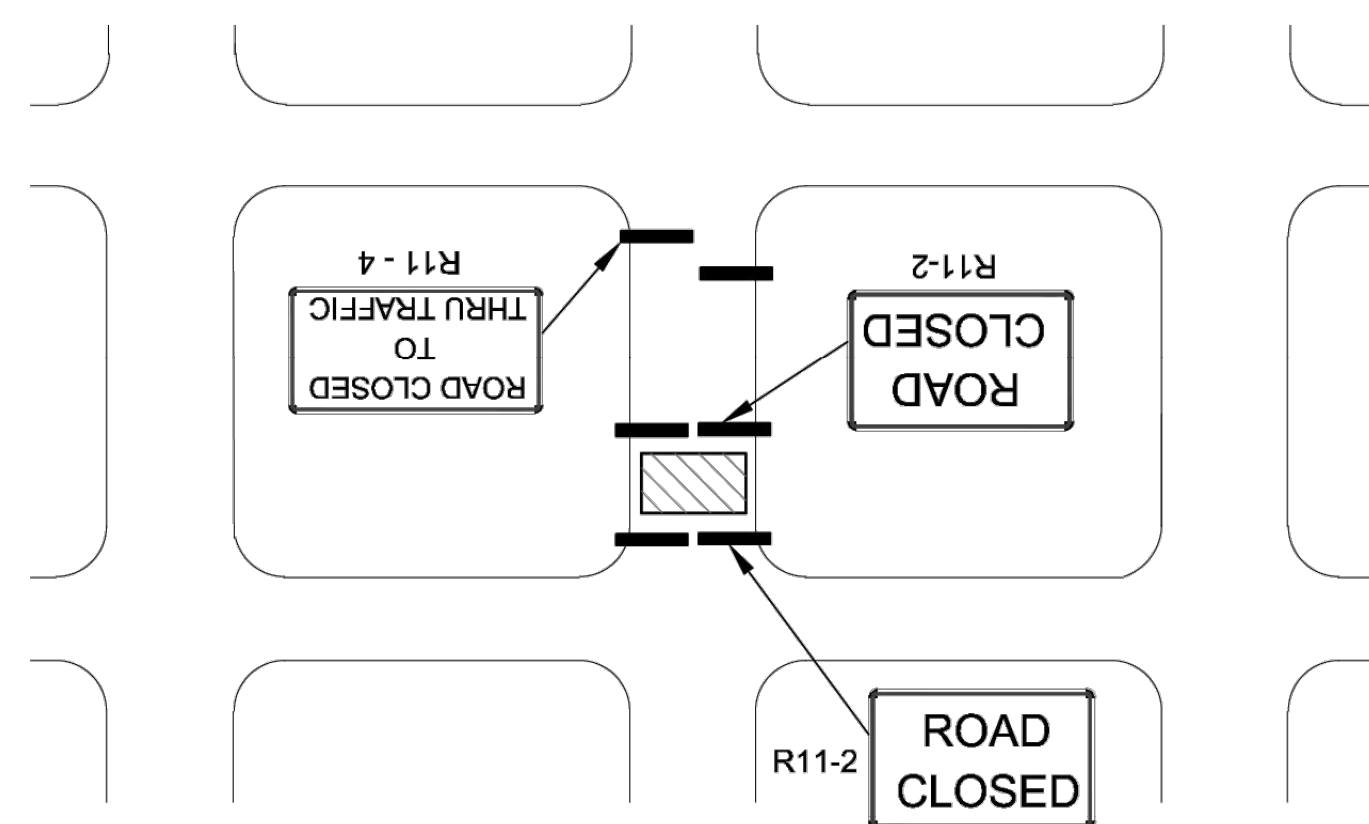
**STANDARD DETAILS
 DT - 118 A**

**TRAFFIC CONTROL
 Arterial Street Closure**

DATE: APR 2026
 PAGE: 116 OF 122
 PROJECT: 701038.00

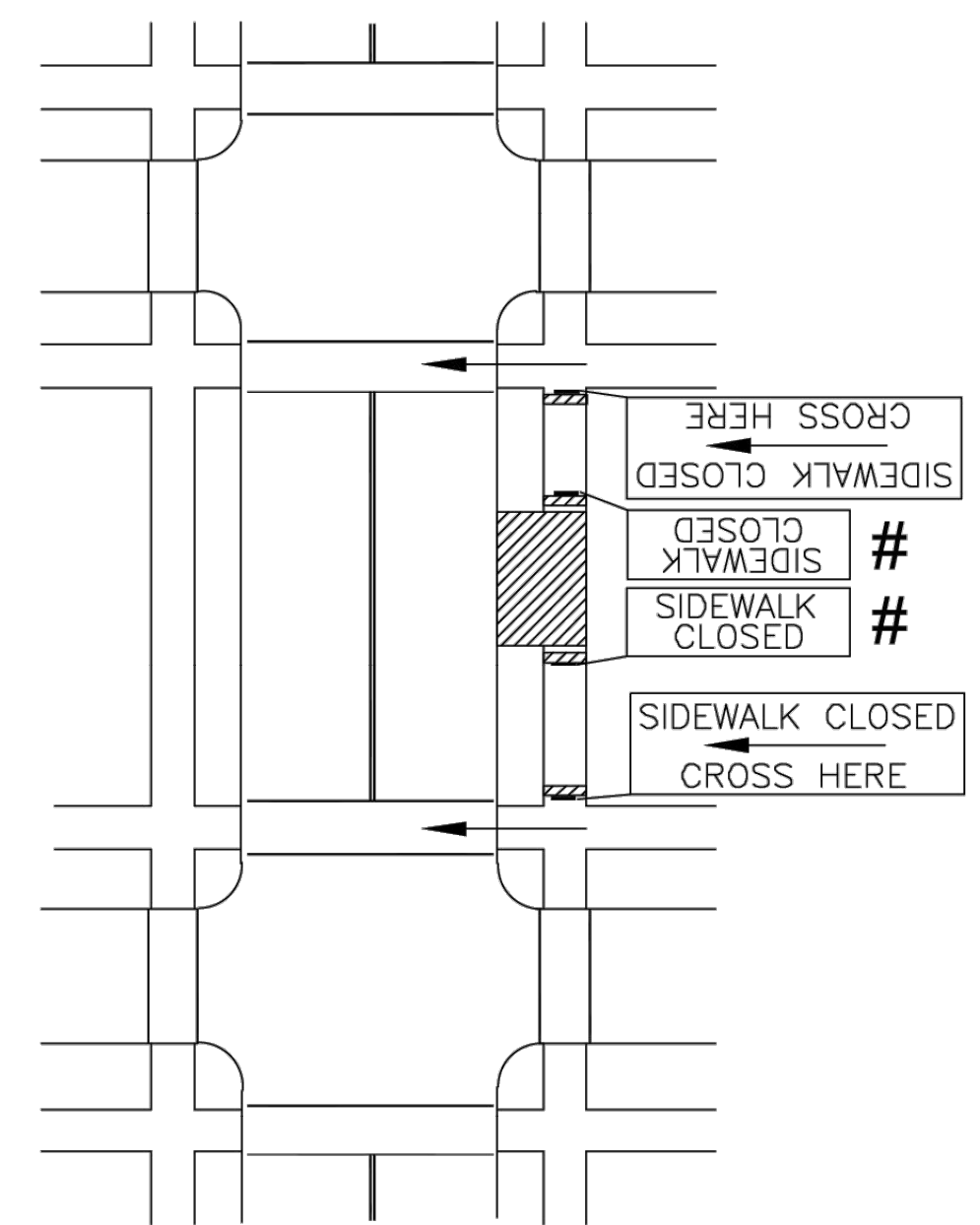


**FIGURE - 118 B (1)
CONSTRUCTION WORK ON RESIDENTIAL / LOCAL STREETS**

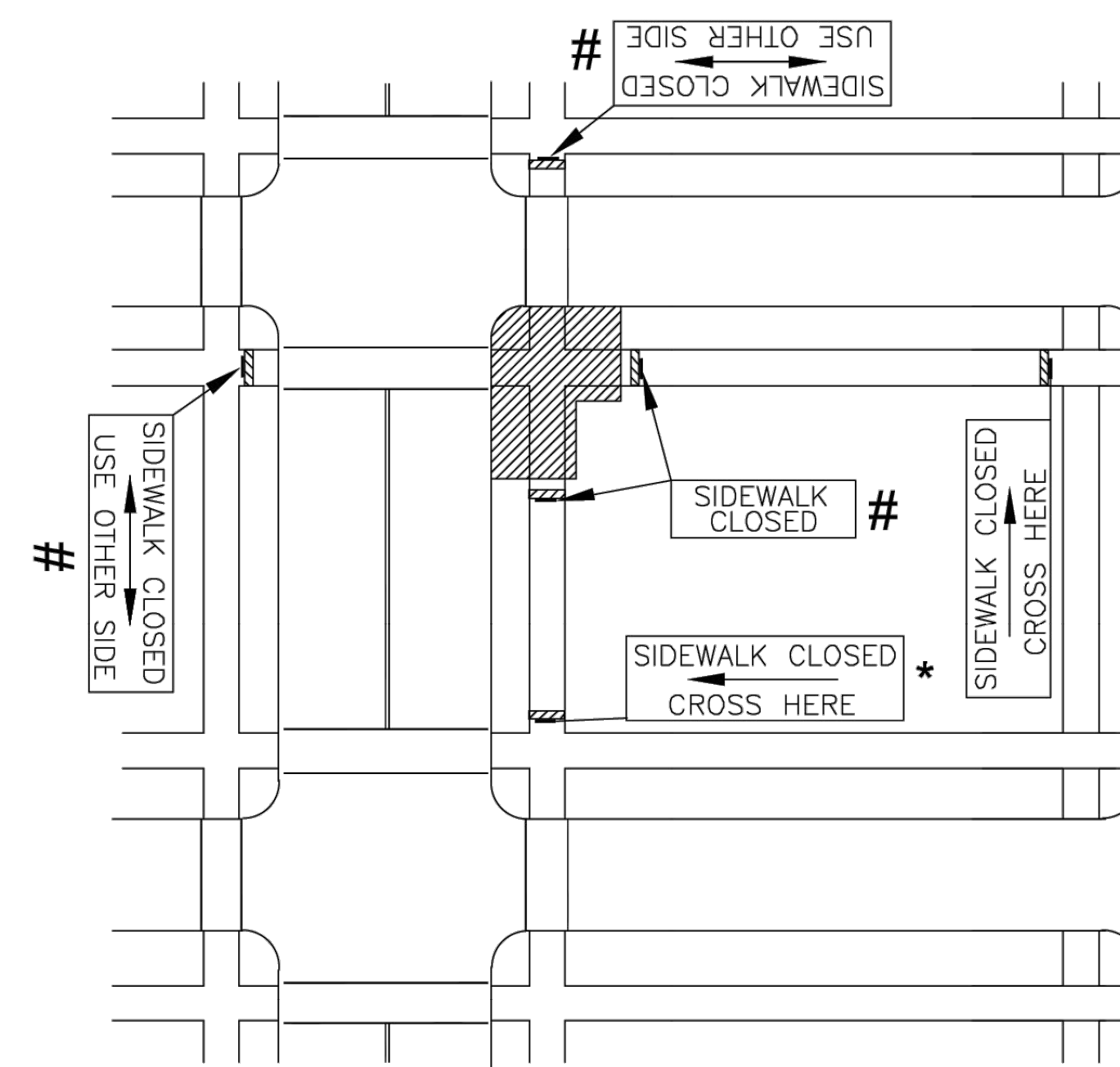


Need for Detour will be determined by the Engineer. Collector Streets cannot be detoured onto local or residential streets.

**FIGURE - 118 B (2)
CLOSURE OF RESIDENTIAL / LOCAL STREETS**



**FIGURE - 118 B (3)
MID-BLOCK SIDEWALK CLOSURE
WITH PEDESTRIAN DETOUR**



**FIGURE - 118 B (4)
CORNER SIDEWALK CLOSURE
WITH PEDESTRIAN DETOUR**

* ADVANCE SIGNS TO BE PLACED ON TYPE I OR TYPE II BARRICADES OR POST MOUNTED. PLACEMENT SHALL BE SUCH THAT SO THAT AT LEAST 48" OF SIDEWALK IS AVAILABLE FOR PEDESTRIAN USE.

SIGNS TO BE PLACED ON CONTINUOUS DETECTABLE DEVICES.

LEGEND			
—	= SIGN	◀◀◀	= ARROW PANEL BOARD
—	= TYPE III BARRICADE	▨	= WORK SPACE
○	= CHANNELIZING DEVICES	⏏	= FLAGGER

1	10/20/30	MAJOR REVISION	SU	KRE
NO.	DATE:	REVISION	BY:	APP'D

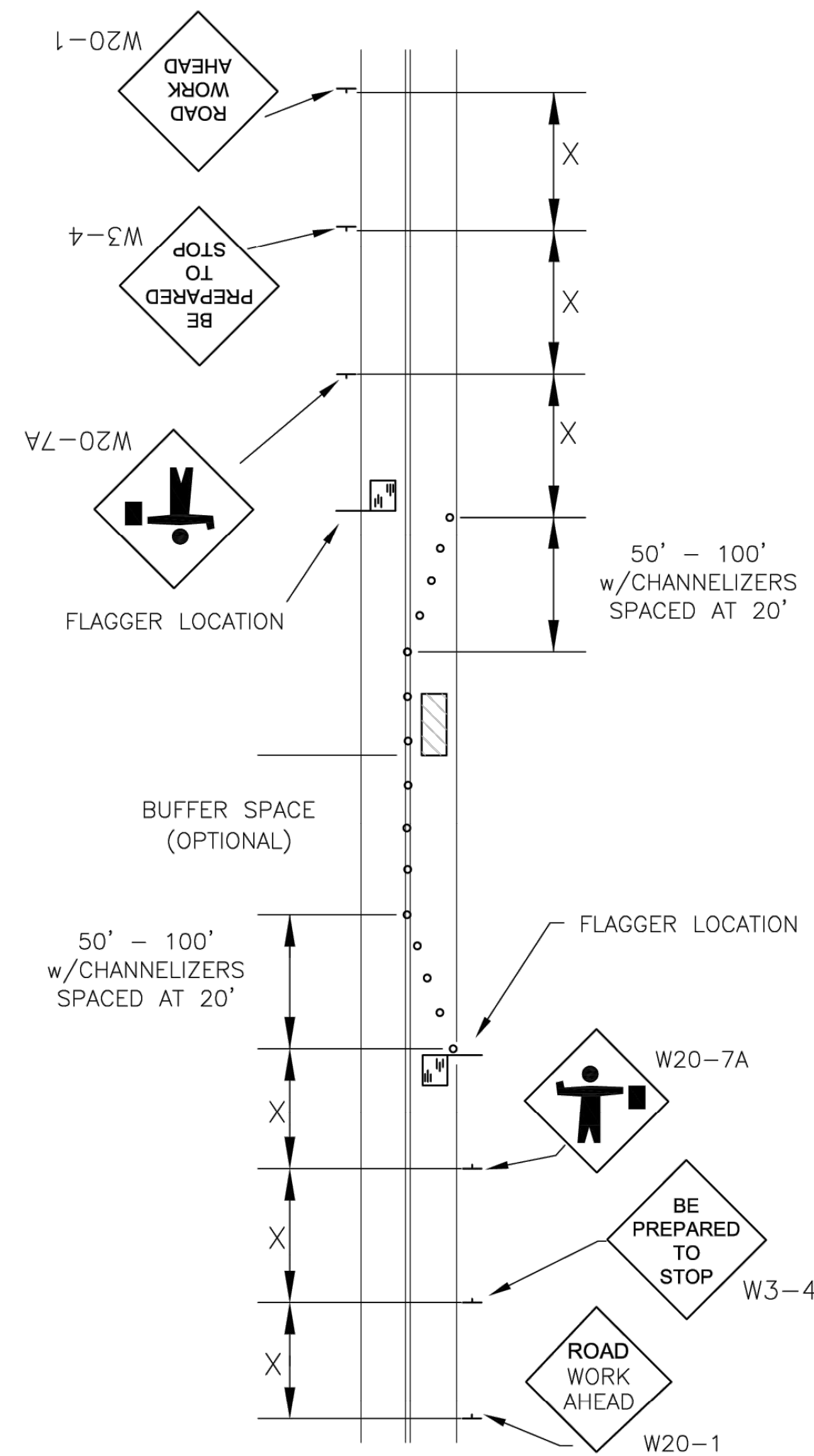
DRAWN BY: Shoeb Uddin
APP'D BY: Kristi Erickson



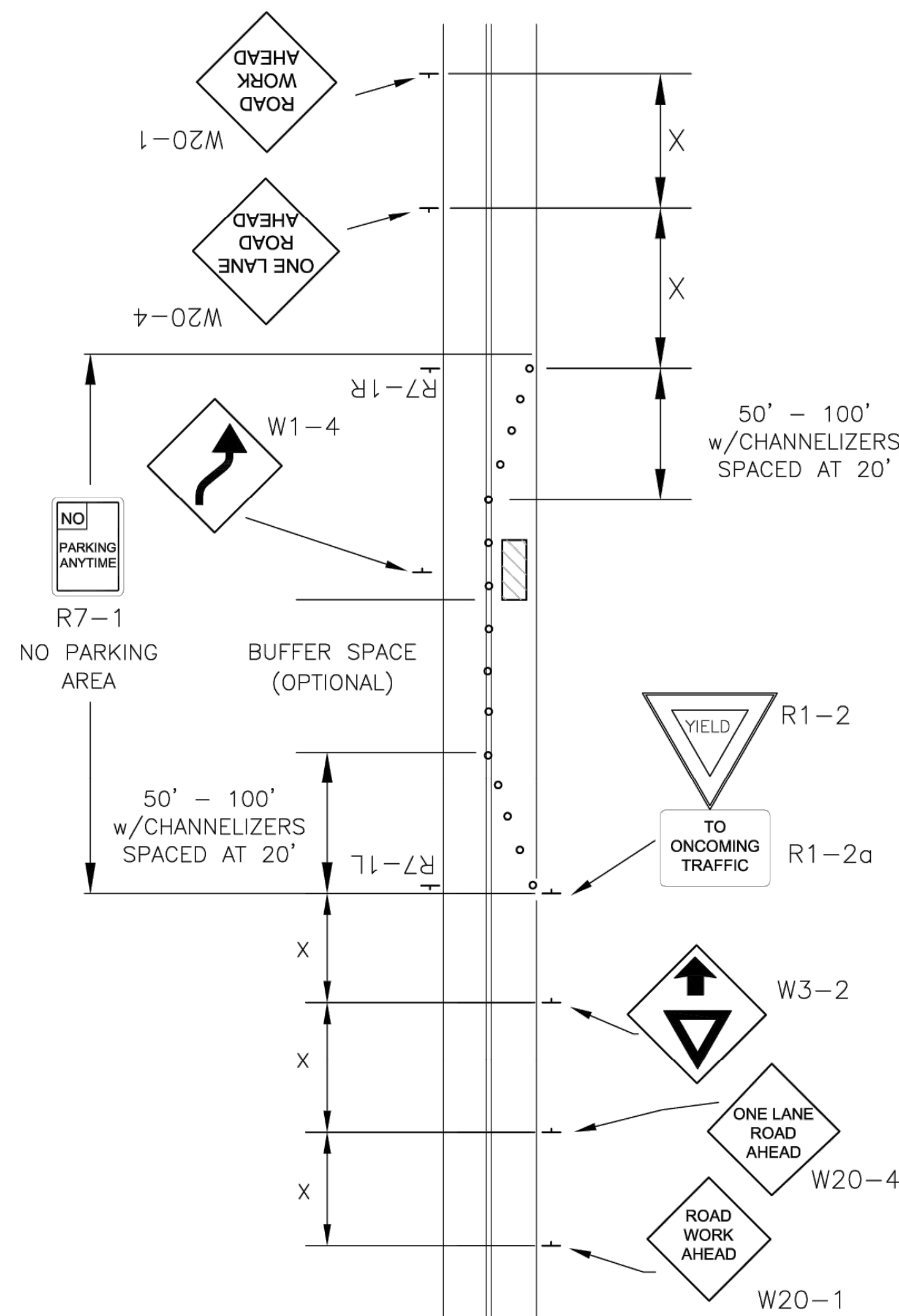
STANDARD DETAILS
DT - 118 B

TRAFFIC CONTROL
LOCAL STREET / SIDEWALK CLOSURES

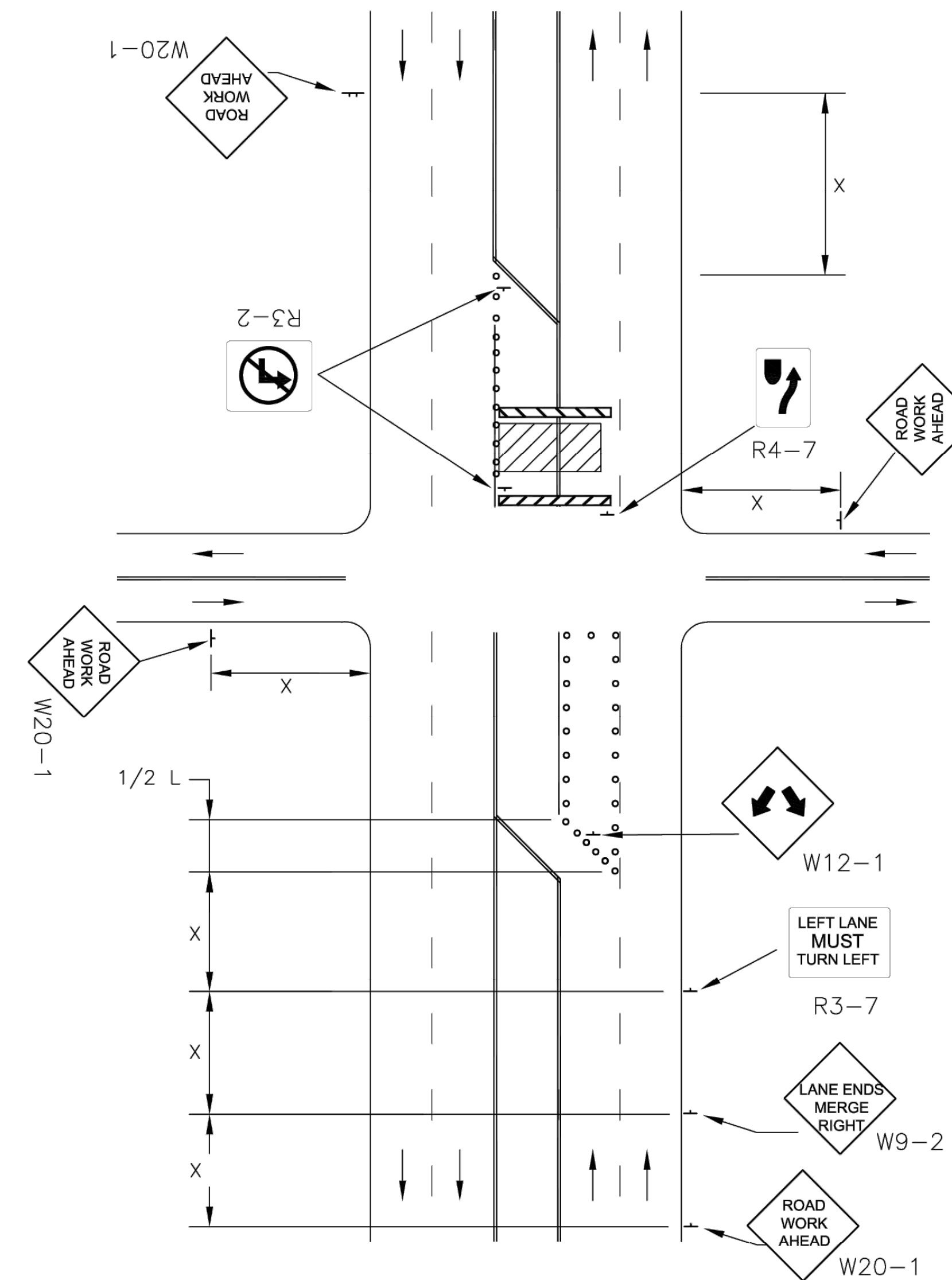
DATE: APR 2026
PAGE: 117 OF 122
PROJECT: 701038.00



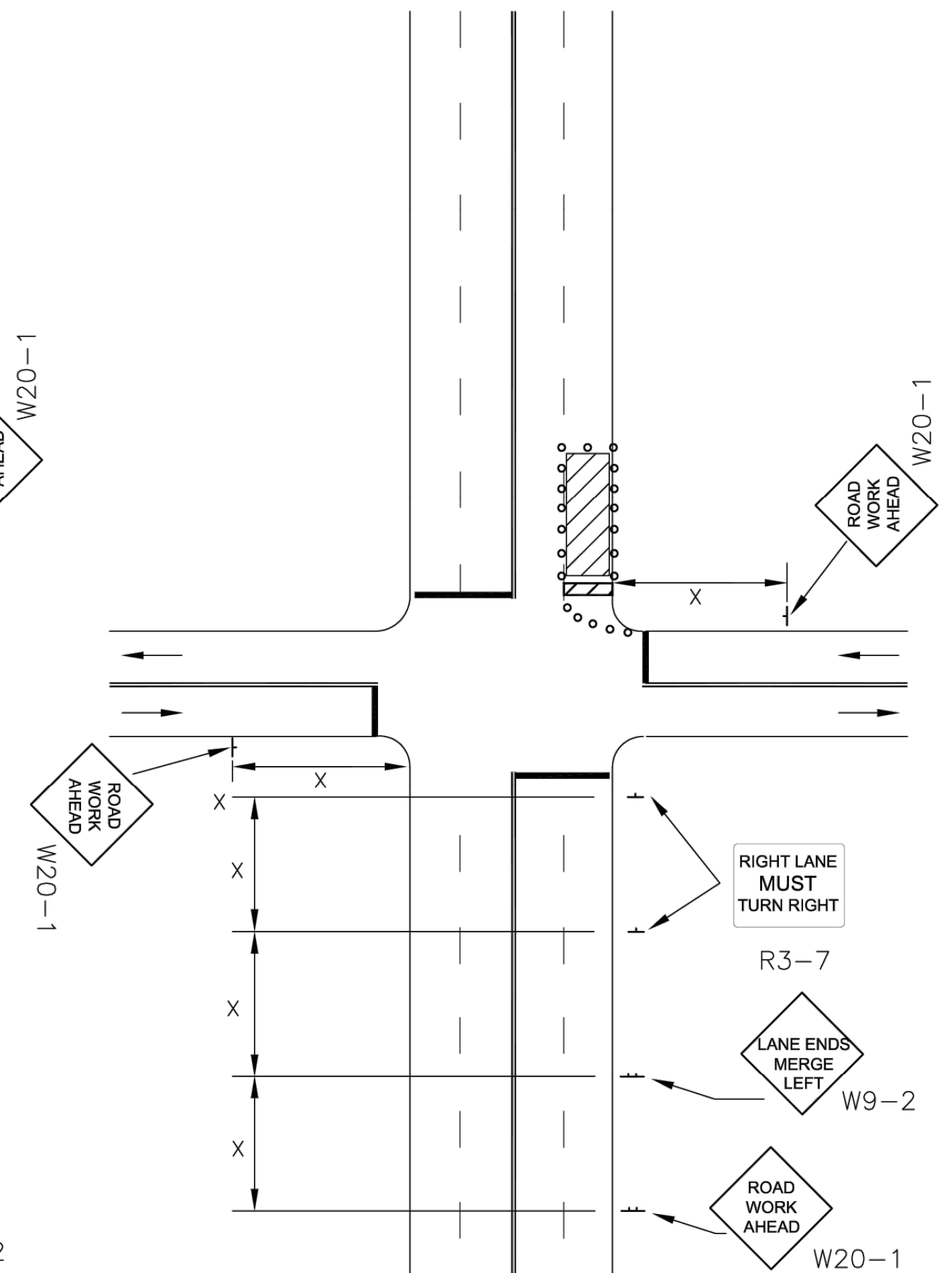
**LANE CLOSURE ON TWO-LANE ROAD
W/ FLAGGER, DAYTIME ONLY**



**LANE CLOSURE ON TWO-LANE ROAD
WITH LOW TRAFFIC VOLUMES
(PRIOR APPROVAL REQUIRED)**



**MULTIPLE LANE CLOSURE AT AN
INTERSECTION**

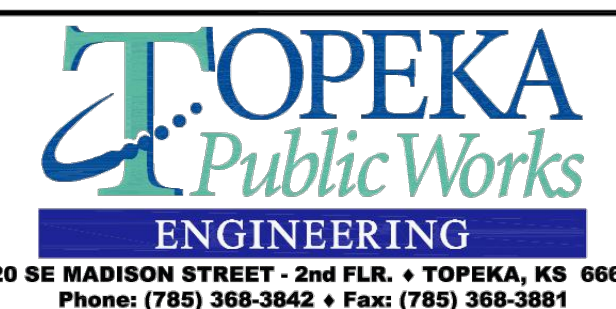


**RIGHT -HAND LANE CLOSURE ON THE
FAR SIDE OF AN INTERSECTION**

REFER TO SHEET DT-118 FOR TAPER LENGTH(L) AND SIGN SPACING(X) VALUES

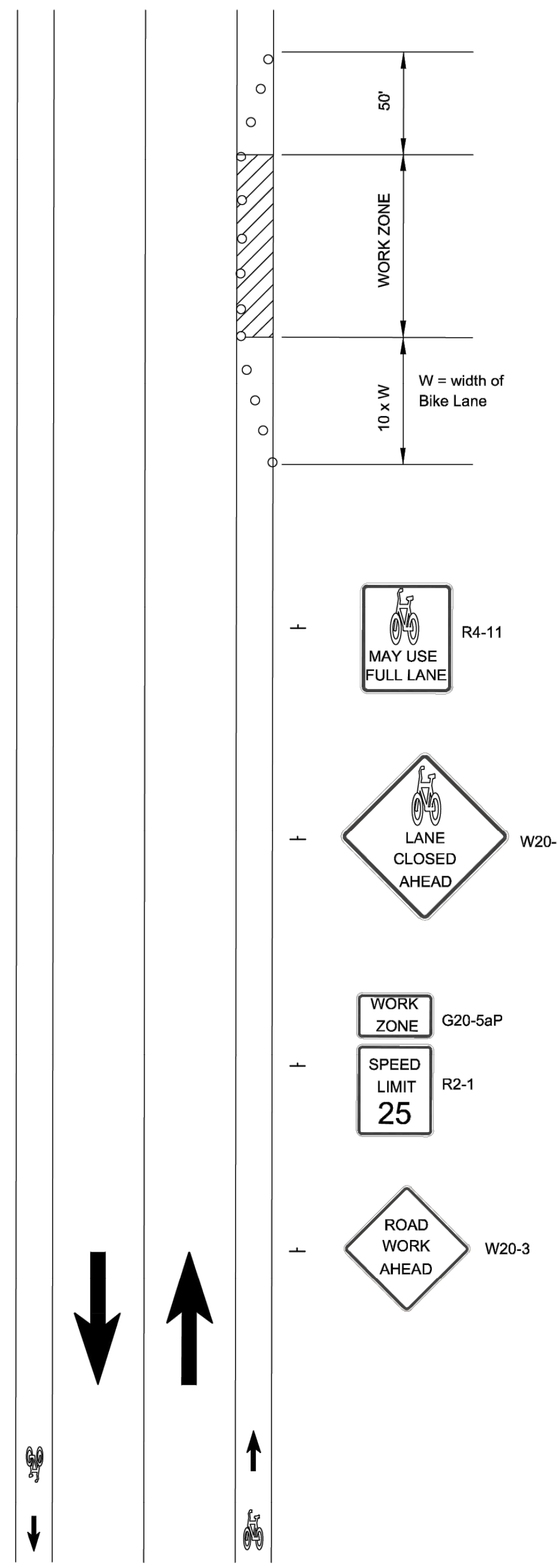
NO.	DATE:	REVISION	BY:	APP'D
3	08/15/23	UPDATE W9-2 SIGN TEXT	AMR	
2	08/06/15	REMOVE W4-7 & REPLACE WITH W9-2	KAP	TLC
1	01/30/12	UPDATE SPECIFICATIONS	KAP	LGV

DRAWN BY: K.PELTON
APP'D BY: T. CODER

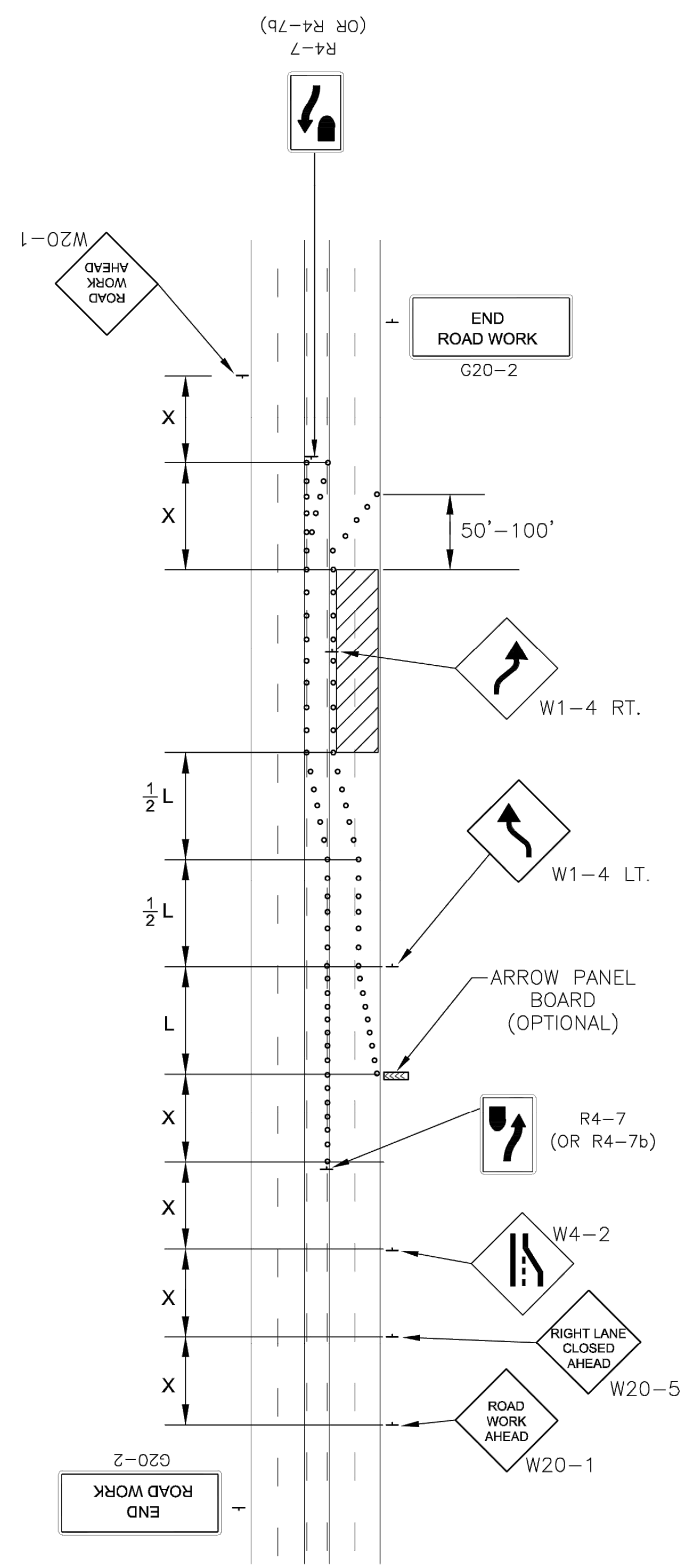


TRAFFIC CONTROL

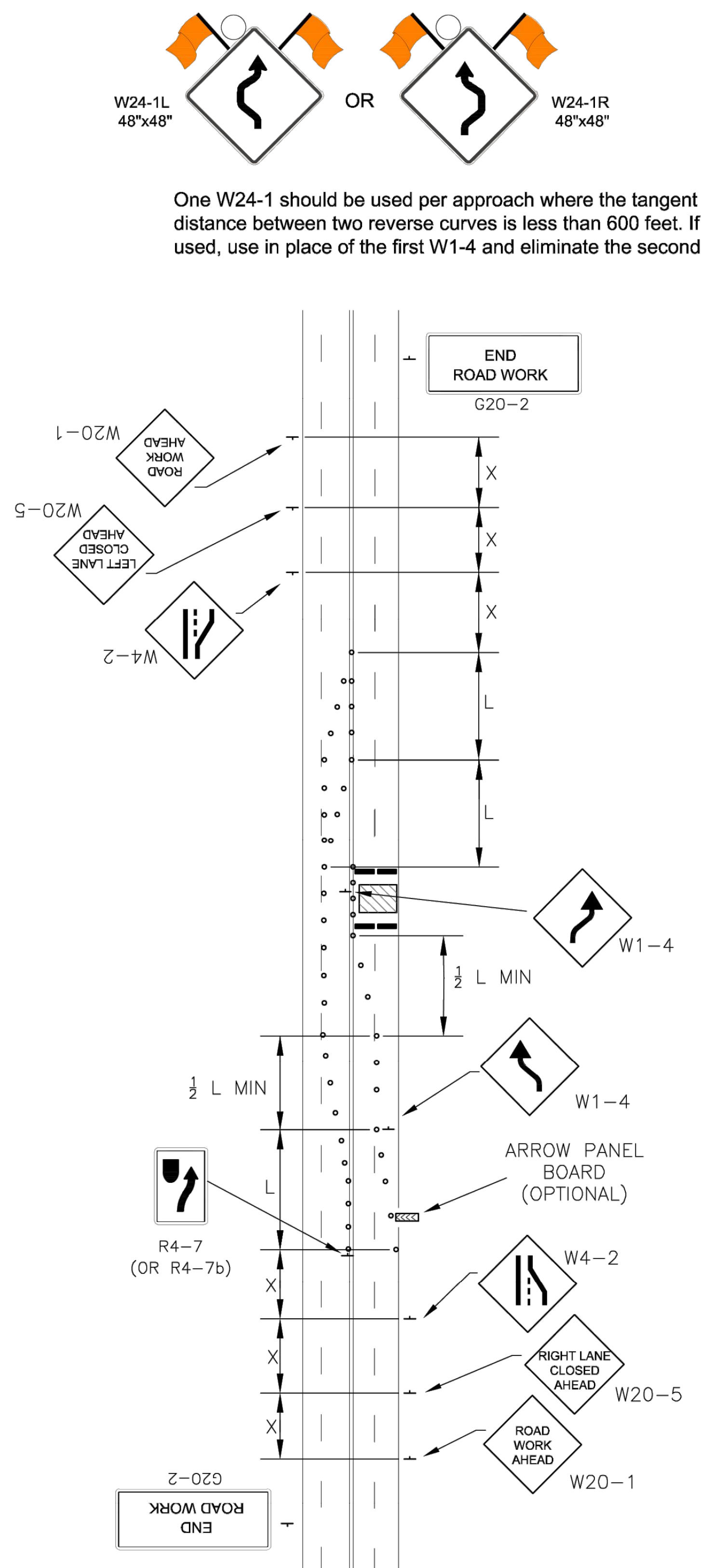
DATE: APR 2026
PAGE: 118 OF 122
DRAWING: DT-119
PROJ. 701038.00



**FIGURE - 120 A (1)
BIKE LANE CLOSURE**



**FIGURE - 120 A (2)
FIVE LANE ROADWAY
w/ TWO LANES CLOSED**
(BASED ON SPEED LIMIT OF 40mph
AND LANE WIDTH OF 12')

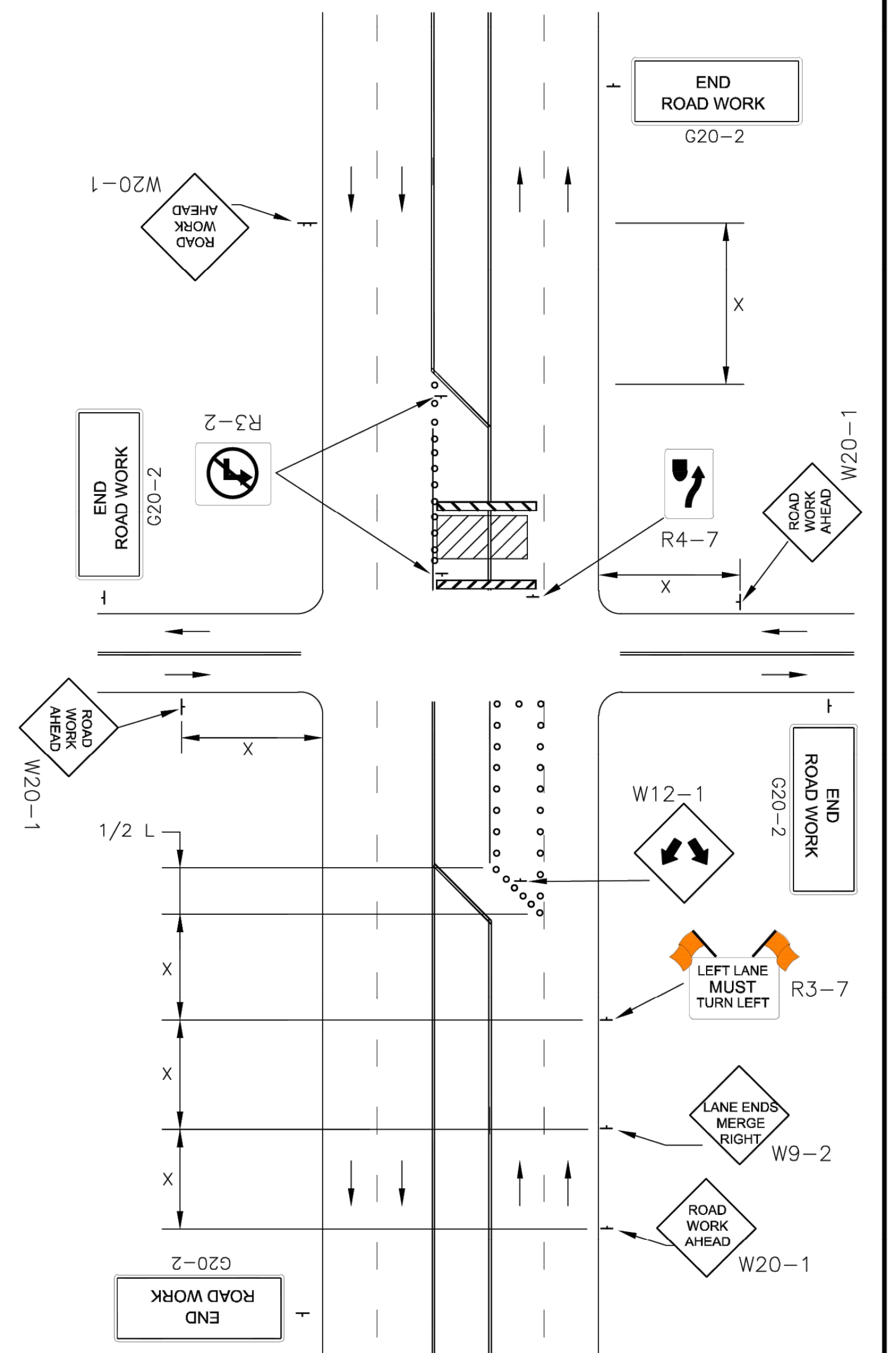


**FIGURE - 120 A (3)
4-LANE UNDIVIDED ROADWAY-HALF
ROADWAY IS CLOSED**

W24-1L 48"x48" OR W24-1R 48"x48"

One W24-1 should be used per approach where the tangent distance between two reverse curves is less than 600 feet. If used, use in place of the first W1-4 and eliminate the second.

NOTE
REFER TO SHEET DT-118 FOR TAPER LENGTH (L),
BUFFER SPACE AND SIGN SPACING (X) VALUES



**FIGURE - 120 A (4)
MULTIPLE LANE CLOSURE AT AN INTERSECTION**

LEGEND	
— = SIGN	◀◀◀ = ARROW PANEL BOARD
— = TYPE III BARRICADE	▨ = WORK SPACE
○ = CHANNELIZING DEVICES	⏏ = FLAGGER

NO.	DATE:	REVISION	SU	KRE
1	10/30/20	MAJOR REVISION		
			BY:	APP'D

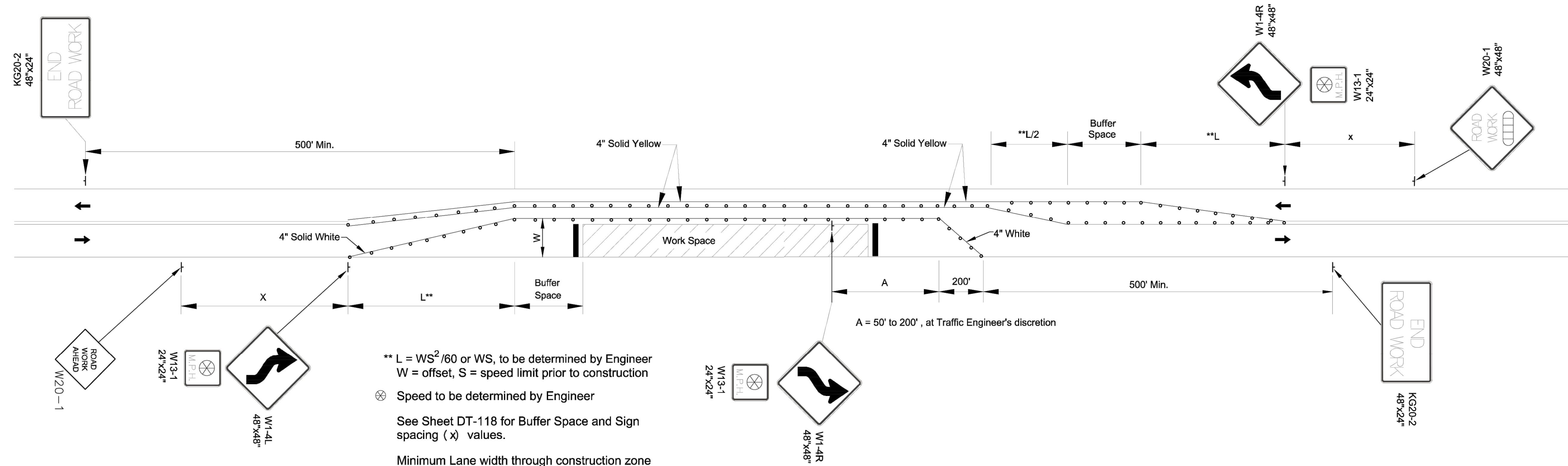
DRAWN BY: Shoeb Uddin
APP'D BY: Kristi Ericksen

TOPEKA
Public Works
ENGINEERING
620 SE MADISON STREET - 2nd FLR. • TOPEKA, KS 66607
Phone: (785) 368-3842 • Fax: (785) 368-3881

STANDARD DETAILS
DT - 120 A

TRAFFIC CONTROL
MULTI LANE CLOSURE
BIKE LANE CLOSURE

DATE: APR 2026
PAGE: 119 OF 122
PROJECT: 701038.00



$** L = WS^2/60$ or WS , to be determined by Engineer
 W = offset, S = speed limit prior to construction
 ⊗ Speed to be determined by Engineer
 See Sheet DT-118 for Buffer Space and Sign spacing (x) values.
 Minimum Lane width through construction zone shall be 10 ft. 9 ft lane width may be allowed at Traffic Engineer's discretion with appropriate advanced warning sign.

**FIGURE - 120 B (1)
ROAD WORK ON WIDE TWO
LANE ROADWAY**

LEGEND	
— = SIGN	◀◀◀◀ = ARROW PANEL BOARD
— = TYPE III BARRICADE	▨ = WORK SPACE
○ = CHANNELIZING DEVICES	⏏ = FLAGGER

NO.	DATE:	REVISION	SU	KRE
1	10/30/20	FULL REVISION		
			BY:	APP'D

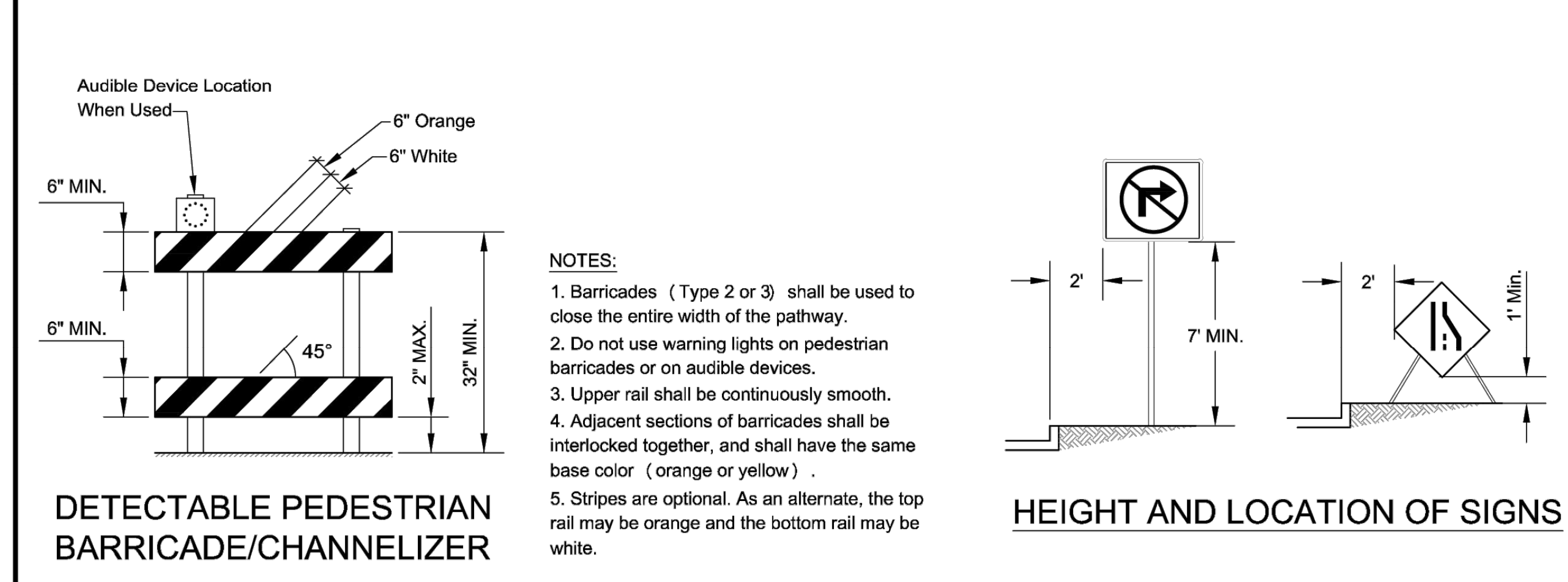
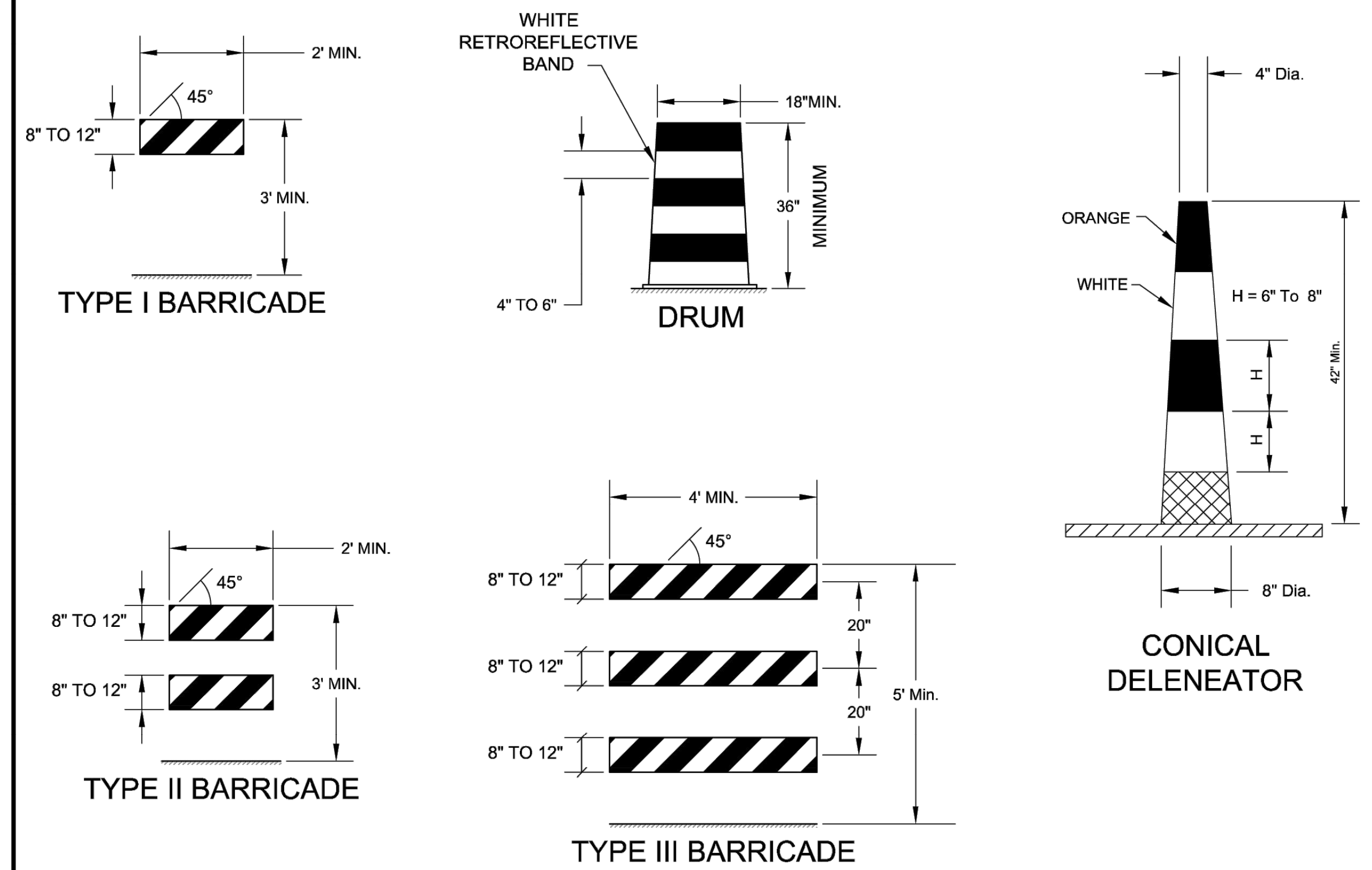
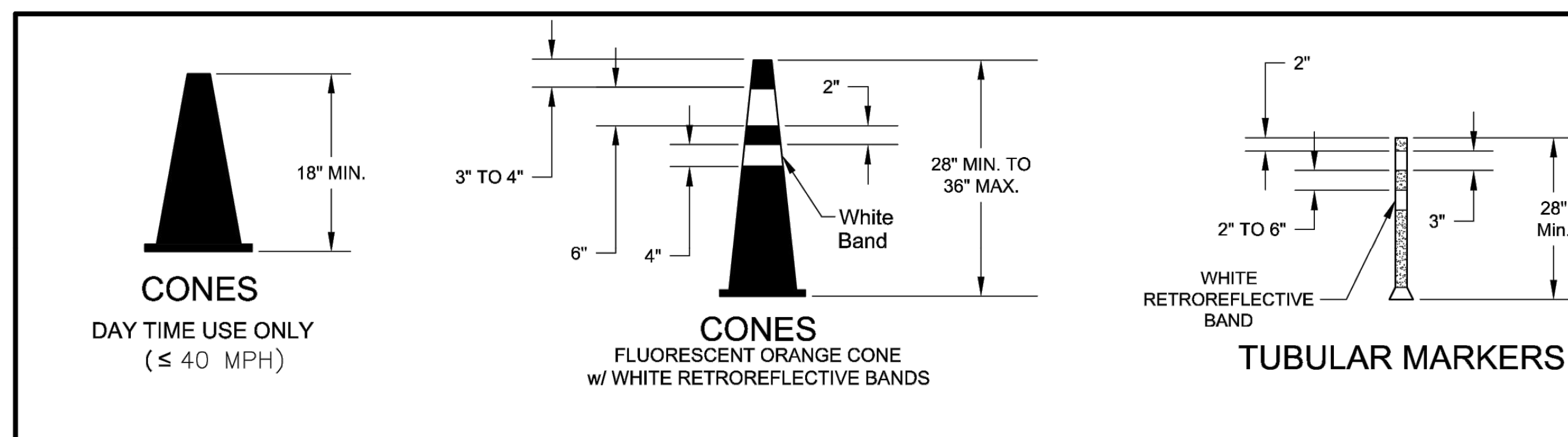
DRAWN BY: Shoeb_Uddin
 APP'D BY: Kristi_Ericksen



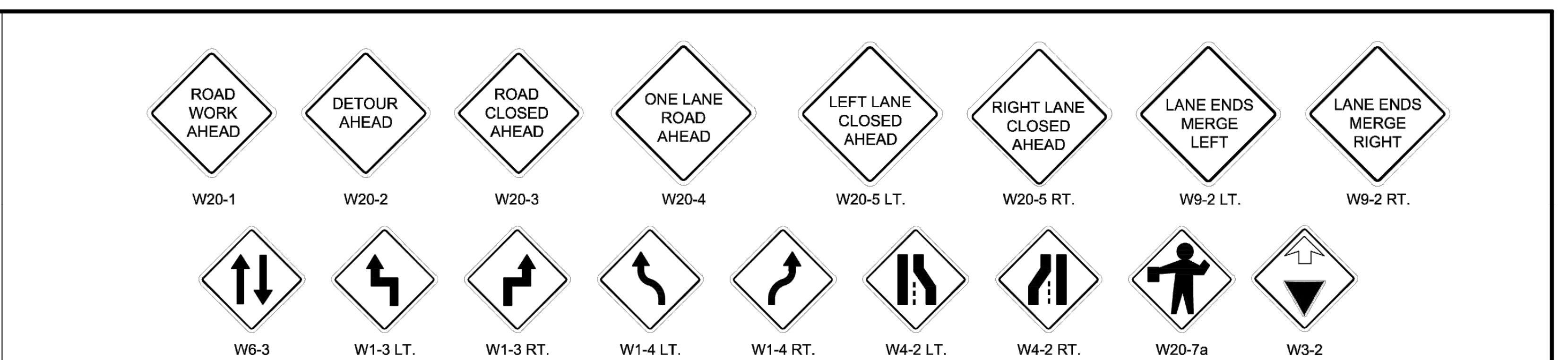
**STANDARD DETAILS
DT - 120 B**

**TRAFFIC CONTROL
CONSTRUCTION ON WIDE TWO LANE ROAD**

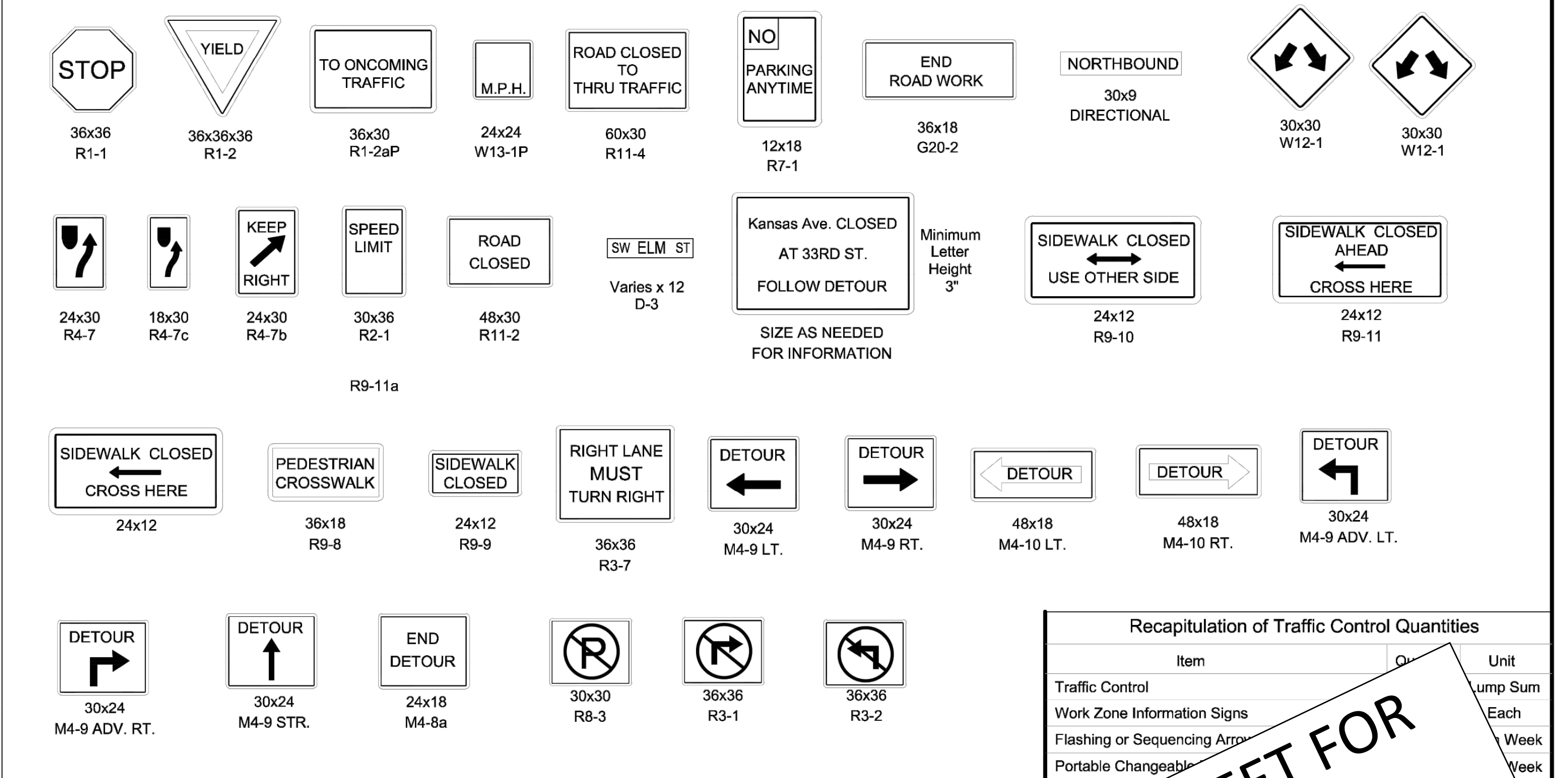
DATE: APR 2026
 PAGE: 120 OF 122
 PROJECT: 701038.00



- NOTES:**
1. Barricades (Type 2 or 3) shall be used to close the entire width of the pathway.
 2. Do not use warning lights on pedestrian barricades or on audible devices.
 3. Upper rail shall be continuously smooth.
 4. Adjacent sections of barricades shall be interlocked together, and shall have the same base color (orange or yellow).
 5. Stripes are optional. As an alternate, the top rail may be orange and the bottom rail may be white.



UNLESS OTHERWISE NOTED ALL WARNING SIGNS SHALL BE 36"x36"



Minimum Size:
Refer to Table 6F-1 of the most recent edition of MUTCD for minimum sizes of all Traffic Control Signs.

TYPICAL TRAFFIC CONTROL SIGNS USED IN CITY PROJECTS

Recapitulation of Traffic Control Quantities

Item	Quantity	Unit
Traffic Control		Lump Sum
Work Zone Information Signs		Each
Flashing or Sequencing Arrow		Week
Portable Changeable		Week
Temporary T		um

SEE NEXT SHEET FOR TRAFFIC CONTROL QUANTITY SUMMARY

